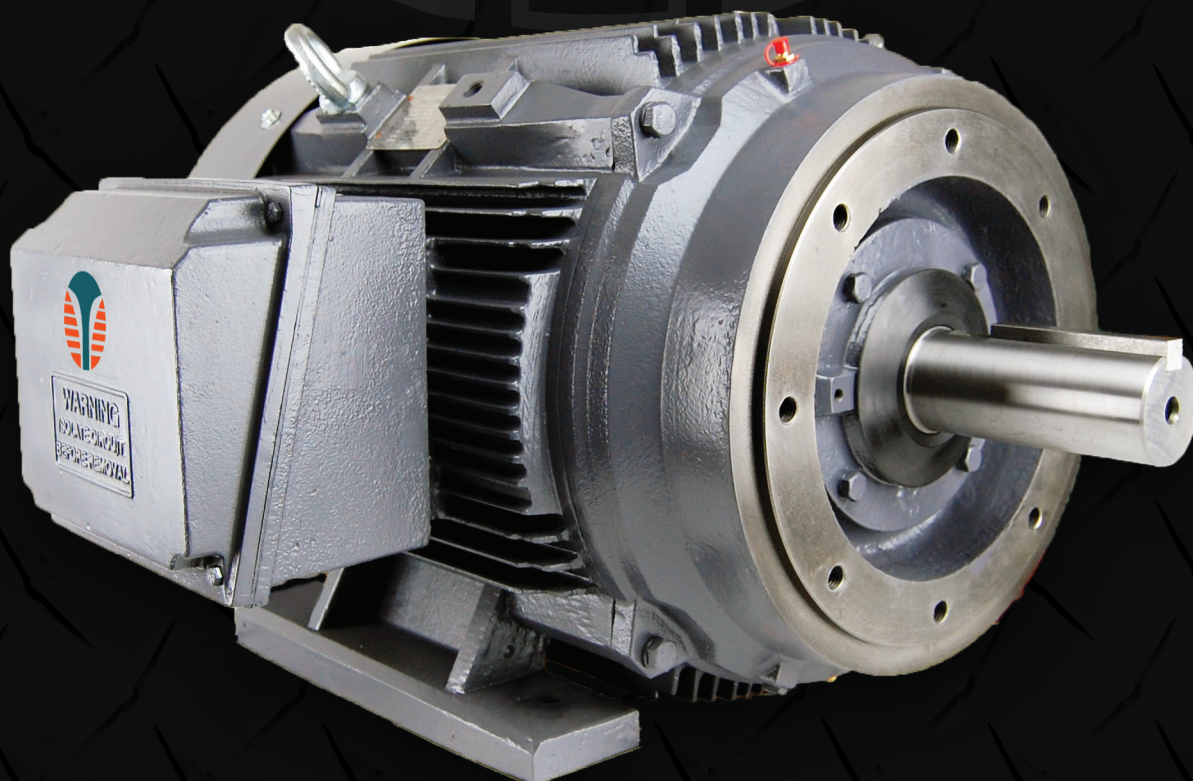




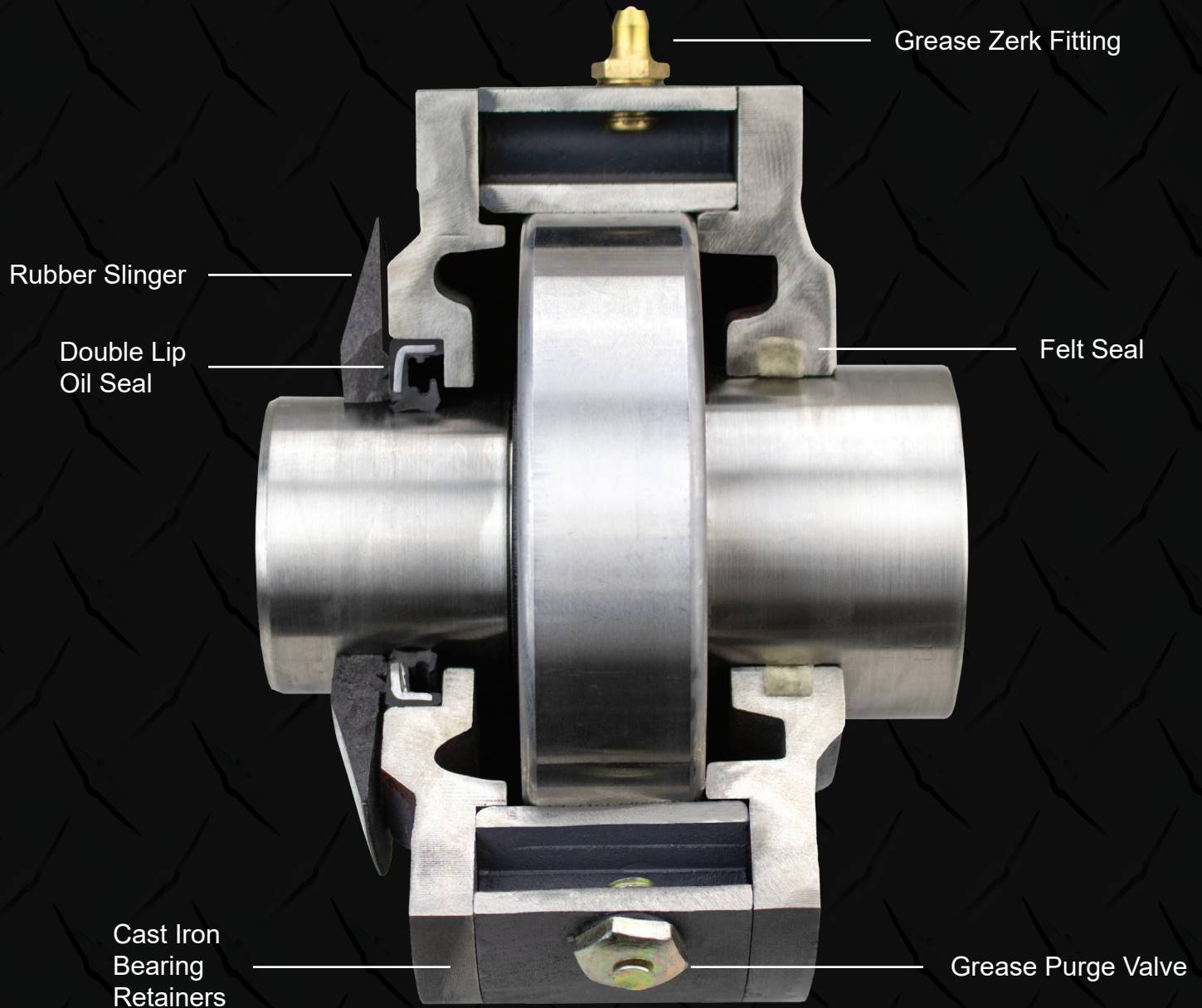
TECHTOP

electric motors

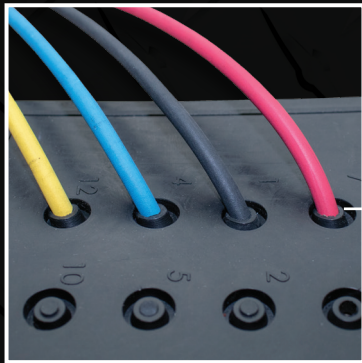




Ingress Protection



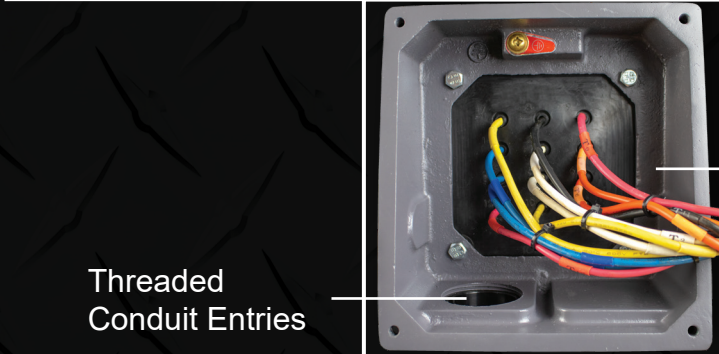
Ingress Protection: Contaminants and moisture can lead to early life failure of a motor. Techtop has gone the extra mile in engineering a system of seals, gaskets and drains that protect our bearings and internal motor components from damage due to these foreign invaders. Wherever your Techtop motor finds itself, it will be protected from the environment, and ready for a long productive life.



Nipple Seals
Move with
Leads



Slingers

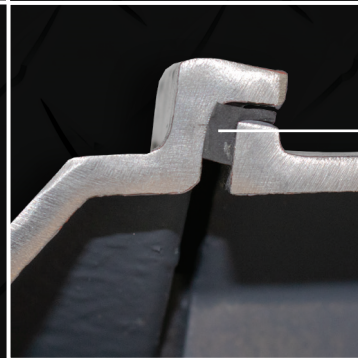


Threaded
Conduit Entries

Conduit Box



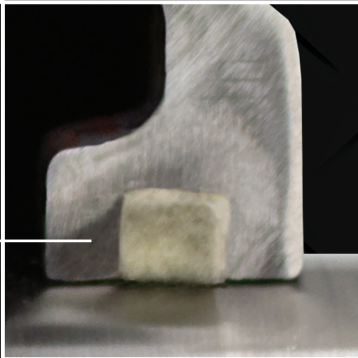
Double Lip
Oil Seal
Close Up



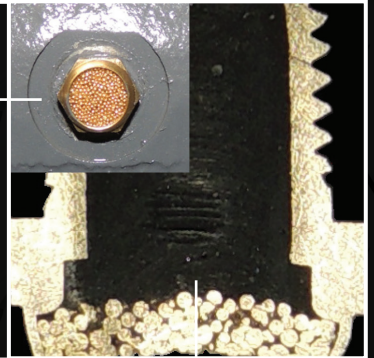
Fully Gasketed
Conduit Box



Felt Seal
Close Up

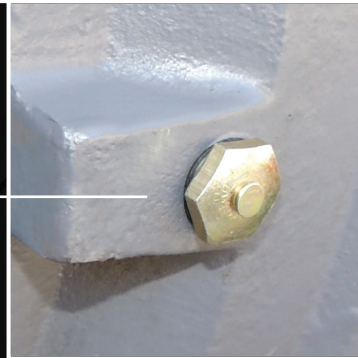


Breather
Close Up



Breather
Cross Section

Grease Purge Valve





Inverter Protection



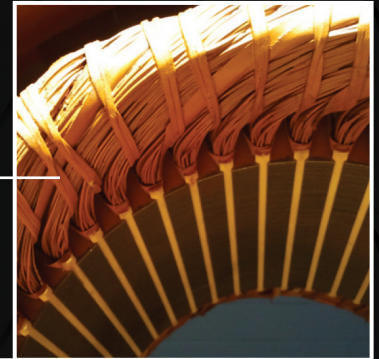
Brush*



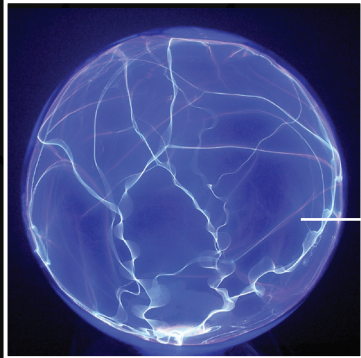
Top Coil
Cross Section



Lap Winding
Pattern



Prevents Corona
Degradation



VPI Tank



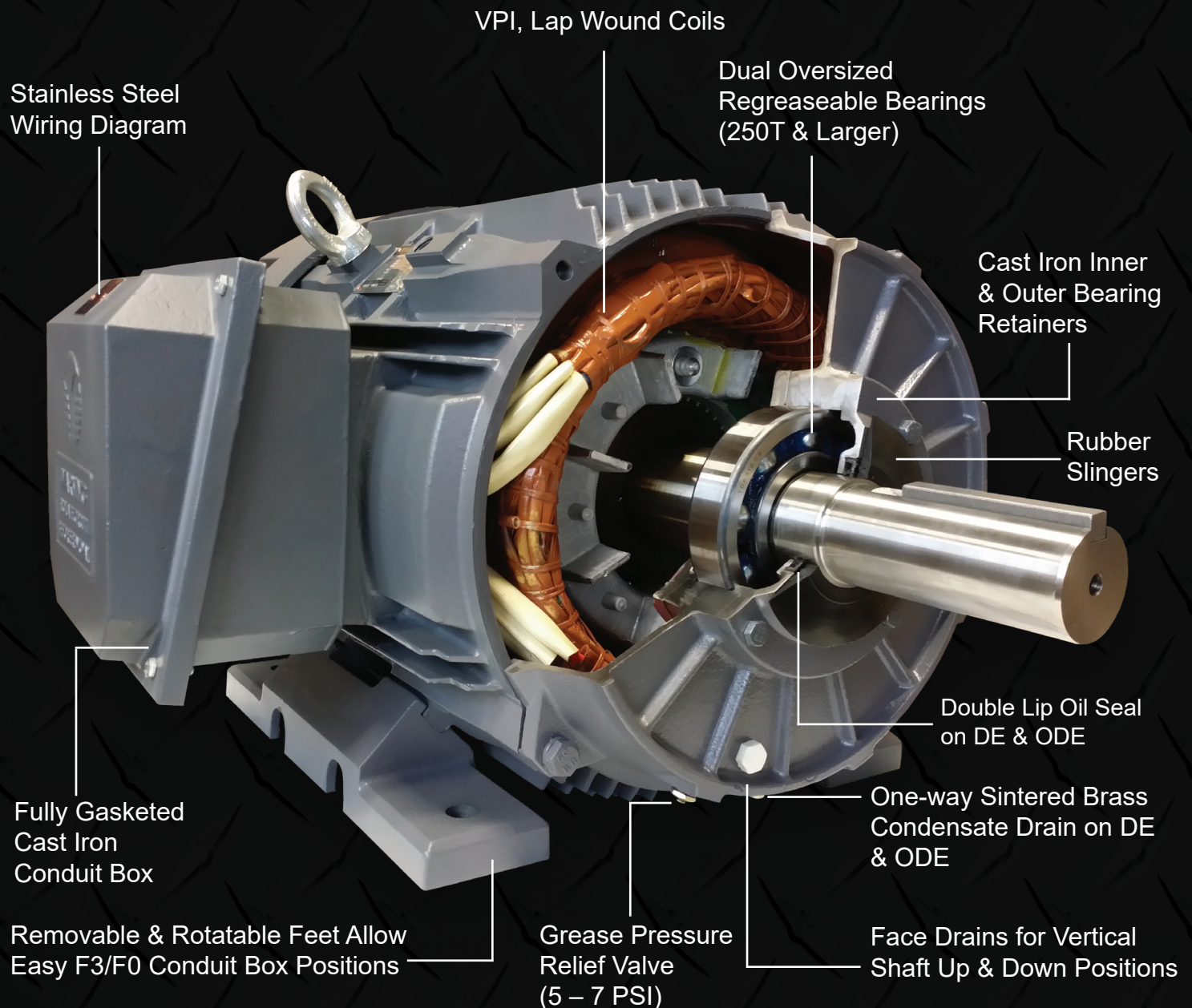
Inverter Protection: Variable speed applications are becoming more prevalent in today's market, especially with the advent of modern pulse width modulated (PWM) drives. Motors now need to deal with significant voltage spikes, heating due to low speeds, shaft voltages and the slow degradation of the insulation by corrosive ozone produced as a result of corona effect. Techtop's inverter duty wire, phase insulation, and our lap winding pattern insulates our coils while minimizing the chance of a short. Our vacuum impregnation process eliminates air bubbles, reducing the deleterious effects of corona. Our efficient design reduces temperatures when running at low speeds allowing for 15:1 constant torque turndowns. Inverter? We're ready.

* Optional Accessory



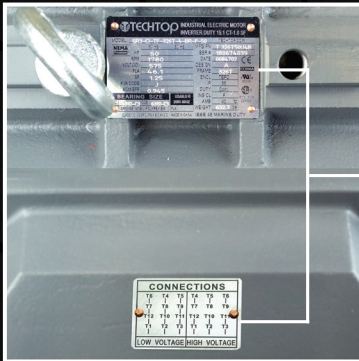
Rugged Construction

Rugged Construction: Often when a Techtot motor ships, it is unknown what application it will be employed into. This means that each Techtot motor needs to be ready to perform in a wide range of applications and we prepare them for the task. From its cast iron frame and dual oversized bearings, to its advanced bearing protection and greasing system, a Techtot motor is ready for your toughest mechanical applications. Our system of gaskets, seals and silicone sealants along with our sintered brass breather drains give us an IP55 rating while keeping our motors dry and clean on the inside. Our insulation system, careful handling of leads, end turns, and crossover tubing provides for a long trouble free life. Tough application? We're ready.

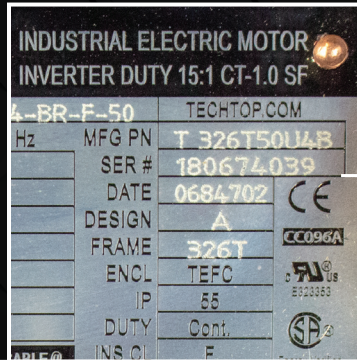




Special Features

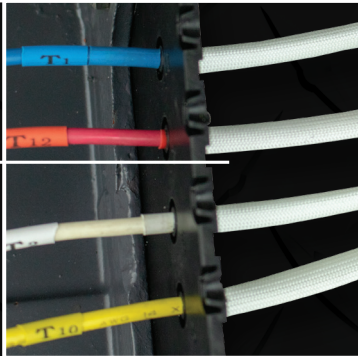


Stainless Nameplate and Separate Connection Diagram

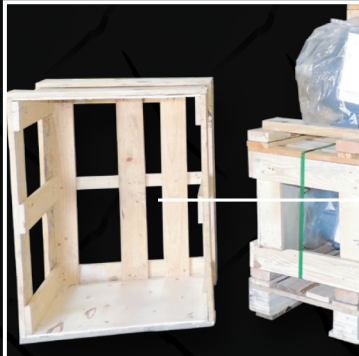
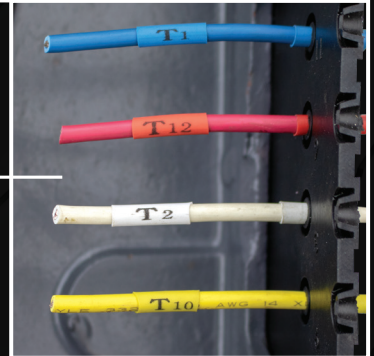


Serial Numbers also on Exterior of Crate

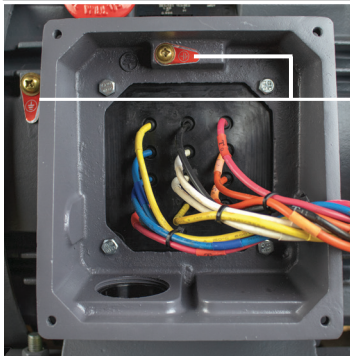
Glass Lead Sleeves



Permanent Legible Lead Markers

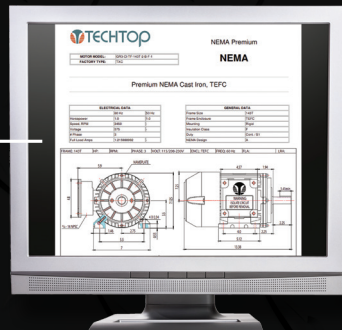


Reusable Crate



Dual Grounding

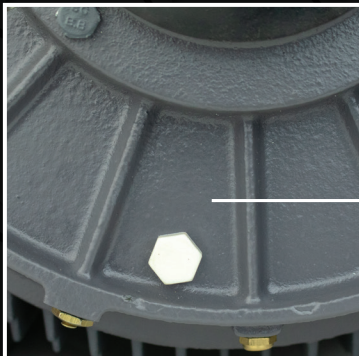
Check Inventory Online



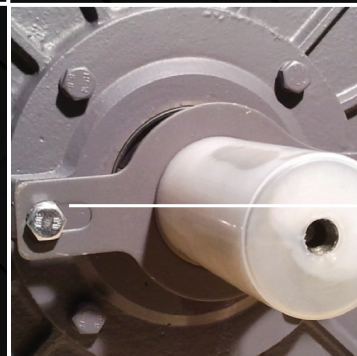
Anti-Bacterial Coating on Windings



3-Part Acid Resistant Epoxy Coating



Shaft Locks Protect Motors in Shipping

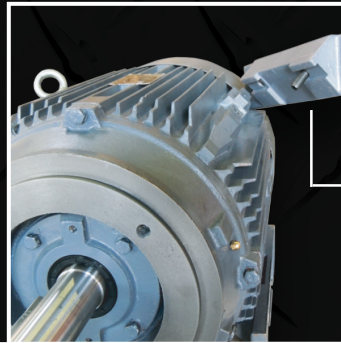




Additional Features: Aside from constructing a motor that is rugged, efficient and versatile, Techtop also pays attention to the little things that improve the overall Techtop experience. Our color coded lead wires, stainless steel connection, diagrams and enclosed lifting straps simplify the installation process. Corrosion resistant hardware, tropicalized windings, IP55 protection system and versatility features such as removable feet and interchangeable bearing retainers make our motors ready for any application. Even our packaging is designed for ease of use and simplicity. Your time and efforts are important to us and we want to do what we can to make the experience as trouble free as possible.



Versatile

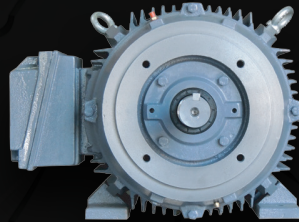
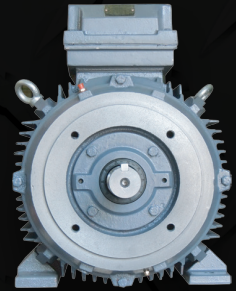


Removable Feet

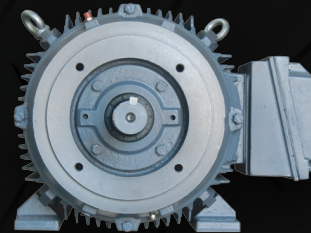
Round Body



F3

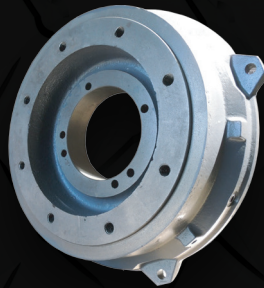


F1

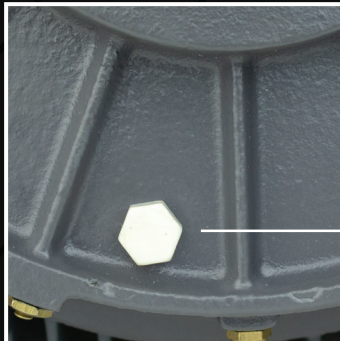
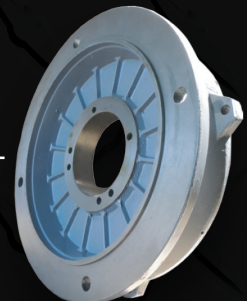


F2

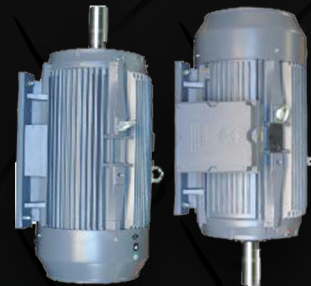
C Face



D Flange

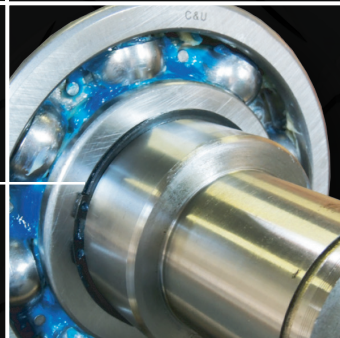


Face Drains for Vertical Installation

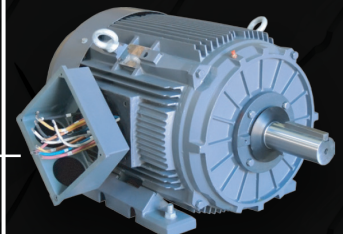


Vertical Installation

Snap Rings Holding Bearing in Place



90 Degree Rotatable Box





Locations



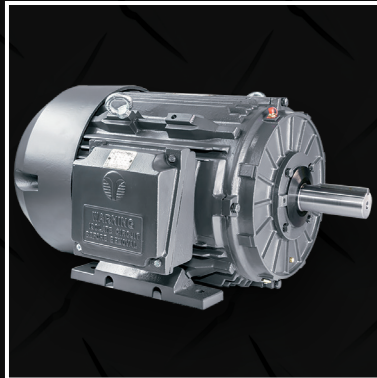
Versatility: Like the Chameleon of the motor industry, Techtop motors are designed to be versatile and configurable to fit comfortably into many environments and applications. Our removable foot configuration allows simple conversion to F1, F2, F3 and round body. Our dual oversized cast iron bearing locks, inner retainer seals, face drains and bearing retention rings allow for mounting and operation in any position. Our standard winding tropicalization, inverter duty insulation system and our IP55 rating allows the motor to enjoy a long operating life in a wide range of environments. Techtop's motor is a true General Purpose motor with the features, benefits and performance to back it up.

Locations: Wherever you are and wherever our motors end up, Techtop is never far away. Techtop warehouses are popping up all over the US and Canada, and with distribution in 6 continents wherever you need us, we will be there.



Techtop Motors Family

GR3 - Cast Iron
1–500 HP
2, 4 & 6 Poles
NEMA 143T–449T
IEC 90-280
Inverter Rated
(MG1 Part 15:1
Constant Torque)



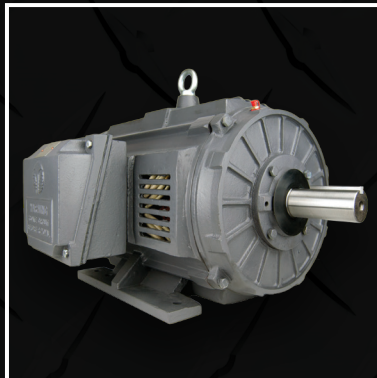
GX3 - Aluminum
1–30 HP
2, 4 & 6 Poles
NEMA 143T–286T
IEC 90-180
Inverter Rated
(MG1 Part 15:1
Constant Torque)



**GR3 - Cast Iron &
Aluminum**
.12–150 HP
2, 4, 6 & 8 Poles
NEMA 56–280
IEC 80-180
Inverter Rated
(MG1 Part 15:1
Constant Torque)



**GR3 -
Open Drip Proof**
1–150 HP
2 & 4 Poles
NEMA 143T–445T
IEC 90-280
Inverter Rated
(MG1 Part 15:1)



**JM/JP Pump
Cast Iron & Aluminum**
1/3–75 HP
2 & 4 Poles
NEMA 56J–365JP
IEC 80-225
Inverter Rated
(MG1 Part 31–20:1
Variable Torque)



**CB3 - Cobra Line
Aluminum**
1/3–3 HP
2 & 4 Poles
NEMA 56C
IEC 80
Inverter Rated
(MG1 Part 31–15:1
Constant Torque)



**CB1 - Cobra Line
Aluminum**
1/3–3 HP
2 & 4 Poles
NEMA 56C
IEC 80
Inverter Rated
(MG1 Part 31–15:1
Constant Torque)



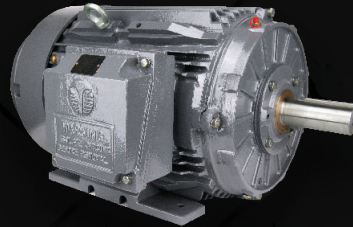


RD1 - Farm Duty
 1/3–10 HP
 4 Poles
 56–215T
 Single Phase
 High Torque

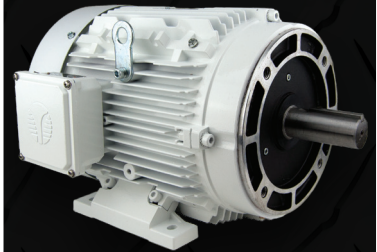


CT3 - Cooling Tower
 5–60 HP
 NEMA 184T–326T
 IEC 112–200
 Inverter Rated
 (MG1 Part 31–1000:1
 Variable Torque)

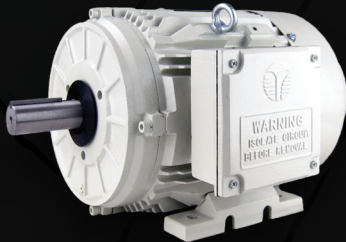
SD3 - IEEE 841
 1–300 HP
 2, 4 & 6 Poles
 NEMA 143T–449T
 IEC 90–280
 Inverter Rated
 (MG1 Part 31–15:1
 Constant Torque)



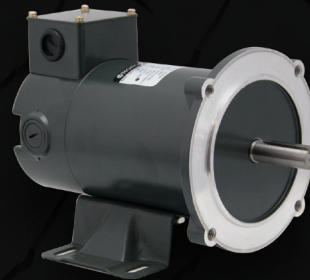
**WX3 - Washdown
 Duty**
 1/3–15 HP
 2, 4 & 6 Poles
 NEMA 56C–215T
 IEC 80–132
 Inverter Rated
 (15:1 Constant Torque)



Rolled Steel PMDC
 TEFC & TENV
 1/8–3 HP
 63B14–145TC
 SCR Rated
 (20:1 Constant Torque)



**BK3 - Oil Pumper
 Design D**
 Cast Iron
 3–125 HP
 6 Poles
 NEMA 213T–445T
 IEC 132–280



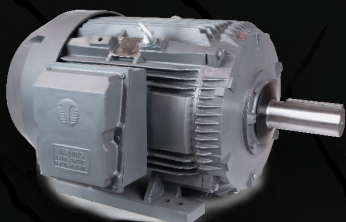
**PC3 - Phase
 Converter**
 Cast Iron
 3–75 HP
 4 Poles
 3 Lead–230V



**SS3 - Stainless
 Steel 56C**
 TEFC & TENV
 1/3–3 HP
 2 & 4 Poles
 IP69K
 Fully Encapsulated



**OX3 -
 Crusher Duty**
 75–300 HP
 4 & 6 Poles
 NEMA 365T–449T
 IEC 225–280
 Roller Bearing



Call: 678-436-5540
 Toll Free: 1-855-TECHTOP
 Fax: 866-204-1498
 Email: info@techttopind.com
 Web: www.techttopind.com



Techtop Industries Inc. | 2815 Colonnades Court, Peachtree Corners, GA 30071 | www.techtopind.com