

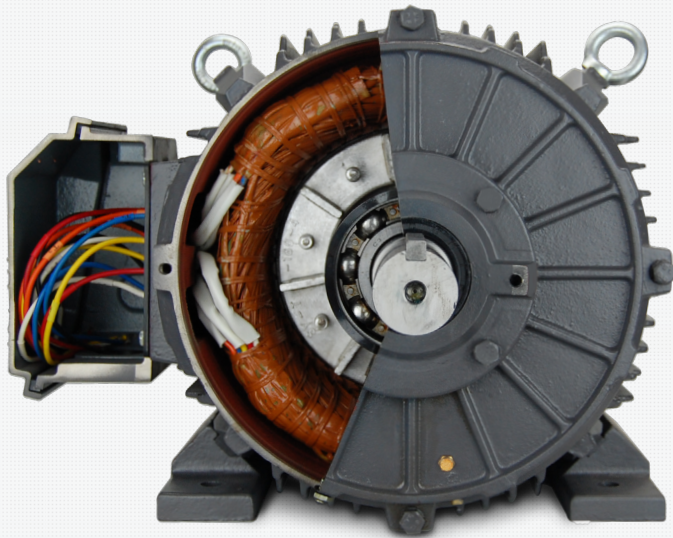
**Contact**

Phone: (678) 436-5540  
Email: info@techttopind.com

**Location Hours**

Mon-Fri: 7:00 am to 6:00 pm EST

**INDUSTRIAL ELECTRIC MOTOR PRODUCT SHOWCASE**



**Techtop Motors** is one of the fastest growing electric motor manufacturers in the industry today. Each Techttop motor is quality crafted with protection features that keep your motor running. 7 stocking warehouses within the US, and 10 worldwide ensure that your motor will be ready, when you need it. Call your local representative to find out the Techttop price!



**PREMIUM EFFICIENCY**

- NEMA PREMIUM® Operating Efficiency reduces overhead energy cost
- Hand inserted Lap wound Stator insures smooth and quiet operation
- True Copper windings and leads reduce loss



**VFD INVERTER DUTY**

- NEMA MG-1 Part 31 15:1 CT Compliant for safe VFD use
- Vacuum Pressure Impregnated Stator provides extra protection from VFD inducing voltage spikes



**EXTRA STRENGTH**

- Dual oversized bearing size gives added strength where motors fail most
- Corrosion resistant 2-part epoxy paint coating
- Full Cast Iron construction for ultimate protection from damage



**INGRESS PROTECTION**

- Double lip shaft seal and full rubber conduit box gaskets equip an IP55 rating ready for severe duty applications
- Internal moisture build-up is dispensed automatically from one-way brass drains located on both ends of the motor

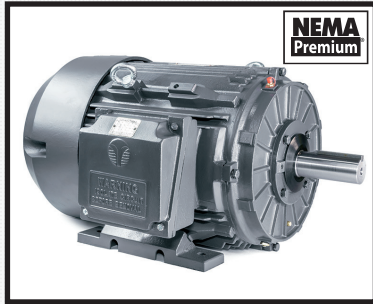


**WORRY-FREE MAINTENANCE**

- Stator winding coated with anti-microbial tropicalization
- Automatic grease purge makes over greasing impossible
- Multi-mount removable mounting feet allow for easy conduit box reposition
- C & D Flanges available to fit any application
- Color coded oversized lead wires ease connection confusion
- 36 Month Warranty from purchase date

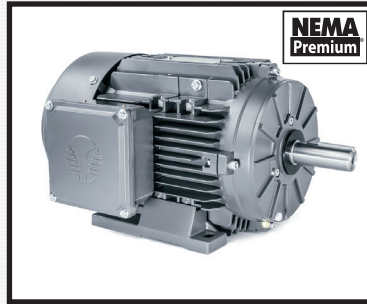
# INDUSTRIAL ELECTRIC MOTOR PRODUCT SHOWCASE

## PREMIUM CAST IRON



**HP: 1 - 300**  
**FRAME: 143T - 449T**  
**RPM: 1200/1800/3600**  
**VOLT: 208-230/460**  
**FACE: T / TC / TD**

## PREMIUM ALUMINUM



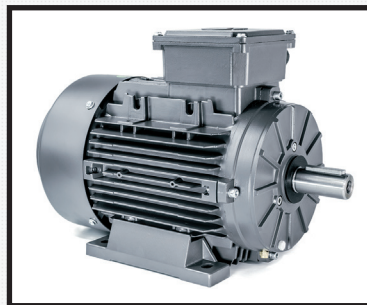
**HP: 1/3 - 15**  
**FRAME: 56C - 215T**  
**RPM: 1200/1800/3600**  
**VOLT: 208-230/460**  
**FACE: T / TC**

## PREMIUM OPEN DRIP



**HP: 1 - 150**  
**FRAME: 143T - 445T**  
**RPM: 1800/3600**  
**VOLT: 208-230/460**  
**FACE: T / TC**

## PREMIUM METRIC IEC



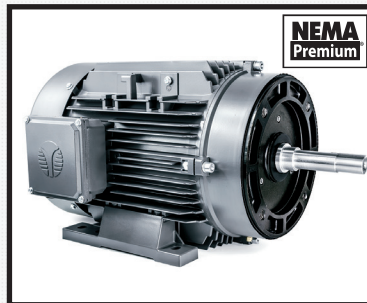
**HP: 1/8-150 (0.09-110 Kw)**  
**FRAME: 56 - 280**  
**RPM: 1200/1800/3600**  
**VOLT: 208-230/460**  
**FACE: B3 / B34 / B35**

## SINGLE PHASE



**HP: 1/3 - 10**  
**FRAME: 56 - 215T**  
**RPM: 1800**  
**VOLT: 115/208-230**  
**FACE: T / TC / RND**

## PREMIUM JM/JP PUMP



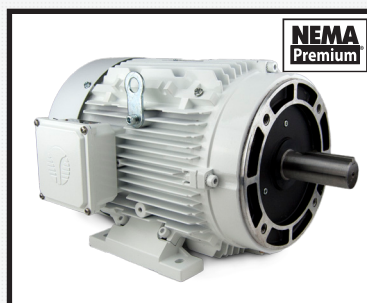
**HP: 1 - 75**  
**FRAME: 56J - 365JM/JP**  
**RPM: 1800/3600**  
**VOLT: 208-230/460**  
**FACE: J / JM / JP**

## IEEE 841 SEVERE



**HP: 15 - 250**  
**FRAME: 254T - 449T**  
**RPM: 1200/1800/3600**  
**VOLT: 460**  
**FACE: T / TC / TD**

## PREMIUM WASHDOWN



**HP: 0.33 - 300**  
**FRAME: 56C - 449T**  
**RPM: 1200/1800/3600**  
**VOLT: 208-230/460**  
**FACE: T / TC / TD**